

OLD TIME PRODUCT GALLERY



City Point Car House

City Point, Virginia was the home of a shipping port, and some interesting facilities of the US Military Railroad. While only a few photos are available, they show the 9-loco engine house and twin water tank to the turntable, machine shop, and car repair house. The model consists of laser-cut wood and cardstock. Peel & stick shingles, positionable windows and doors, interior bracing, individual battens, work benches, ladders, and a car under repair are included. The footprint is approx. 37' x 51'.
 #27803 HO Scale City Point Car House \$ 59.95
 #17803 O Scale City Point Car House \$ 124.95
 Future releases in the City Point series: Twin Water Tanks, Engine House, Machine Shop Addition and Turntable.

B.T.S. Better Than Scratch!

RR 1 Box 141A Belington, WV 26250 Phone: 304-823-3729 FAX: 304-823-2901
<http://www.btsrr.com>

American Standard 4-4-0 Locomotives



Bachmann's HO scale 1860s and 1870's era American Standard 4-4-0 locomotives are available in a number of colorful road names. These models feature smooth running mechanisms and a number of details unique to each model. They are a key item for anyone modeling the Mid-1800s.

Bachmann Industries, Inc.

1400 East Erie Avenue, Philadelphia, PA 19124

www.bachmanntrains.com

Winan's Camel

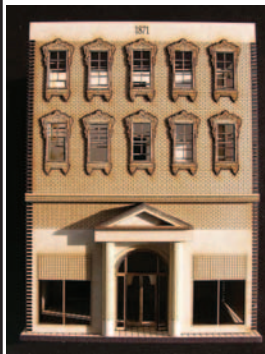


When originally constructed in the 1850s, Winan's Camel represented the superpower of the age. Weighing in at nearly 30 tons, the Camels hauled long strings of iron pot hoppers from the coal mines of Western Maryland. When finally retired in the 1890s these eight coupled locomotives were the archetype heavy haul engines.

Factory Direct Trains

2004 Riverside Drive, Unit V, Asheville, NC 28804
 1-800-990-3381

www.factorydirecttrains.com



1871

Imagine That! is a new, small and intimate company though growing rapidly with new products being created weekly. The kits are primarily HO at this time however N, S and On30 scales are being created to fill the demand. Our HO Scale 1871 takes engraving to a new level because we can do it in the round now. Check out the columns. Lots more on our website!



Imagine That Laser Art

8349 Aalbers Cres. R. R. 1, McGregor, Ontario N0R 1J0 Canada

<http://www.imaginatelaserart.com>



Laser Cut N and Z Scale Rolling Stock

38 Foot Stock Car
\$17.99

40 Foot Flat/Gondola
\$13.99

Less Trucks and
Couplers

RSlaserkits

Phone: 503-371-4290 Between 5-9PM PST and on Weekends

Fax: 503-585-0850 www.RSlaserkits.com

5145 Gaffin Rd. SE. Salem, OR 97301



Hunterline Howe Truss Bridge

The building material of choice in the early 19th century was usually wood. As rights of way moved forward wood trestles and bridges spanned chasms and filled gorges. Hunterline offers superb easy to build models of a number of these classic structures.

Hunterline

1072 Riverbank Drive, Cambridge, Ontario, Canada, N3H 4R6
 866-934-4174

rick@hunterline.com www.hunterline.com

Electronics for the Hobbyist



In addition to the many unique sizes of light bulbs and specialized electronic kits, Miniaturics offers several useful micro-sized plug-in connectors.

Miniaturics

"electronics for the hobbyist"

561-K Acorn St., DeerPark, NY 11729 1-800-942-9439 631-242-MINI

www.miniaturics.com

THE COMPLETE LINE OF "SILVER STREAK"



BOX CARS, REEFERS AND CABOOSES ARE NOW MANUFACTURED BY "YE OLDE HUFF N PUFF" USING THE ORIGINAL DIES, MOLDS AND CASTINGS. PREPARED AND LETTERED SCRIBED WOOD SIDES, ONE-PIECE MOLDED STYRENE ENDS, AND CAST METAL

DETAIL PARTS. TRUCKS AND COUPLERS ARE NOT INCLUDED. CARS ARE DECORATED FOR THE "CLASSIC AGE OF STEAM" WE ALSO CARRY A COMPLETE LINE OF "SILVER STREAK" PARTS. VISIT OUR WEB SITE FOR A COMPLETE LISTING OF ROAD NAMES AND PRICES. OR SEND \$4.00 FOR CATALOG.

YE OLDE HUFF N PUFF

"THE NEXT BEST THING TO SCRATCH BUILDING... MAYBE BETTER"

P.O. Box 1103, Lewistown, PA 17044 • Ph:(717)248-8935

www.yeoldehuffnpuff.com